



at University of California, Irvine

THE OUTLOOK

The Monthly Newsletter of OLLI at UCI

Volume 19 Issue 8

April 2017

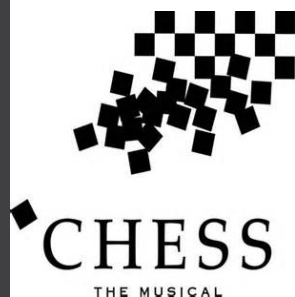
SPOTLIGHT
New Special Event on Saturday, May 20.



**A concert video of the musical *CHESSE*
with discussion and lunch.
See details on flyers in the Onken classroom.**

This video depicts the politically driven Cold War chess tournament fashioned after the famous American grandmaster Bobby Fischer and Russian grandmaster Anatoly Karpov.

SE 71, \$55. Register at <https://ce.uci.edu/OLLI>
or phone 949-824-5414, extension 0



**Non-members welcome--
bring your friends!**

THE BOARD'S CORNER

As we find ourselves midway through the Spring Semester, there have been multiple comments and questions about events at UCI that may interest our members. Since we have only so much space to alert members of our own activities, we rely on you to use the links (i.e. *click here* notations) to find more specific information. Sometimes this process may appear daunting, but patience and



perseverance will almost always get you to the site with more information.

For example, in the UCI section of this newsletter, the reader needs to press the "click here" to get to "UCI Today" and then scroll down the right side of that website to click on the "month" link for the month's listings. The process is definitely linear and not always intuitive, but a little experimentation will usually produce helpful results. Hope this answers some of your questions. There certainly are a multitude of offerings at UCI for which we are very fortunate and appreciative.

Pat Linehan, President, OLLI at UCI

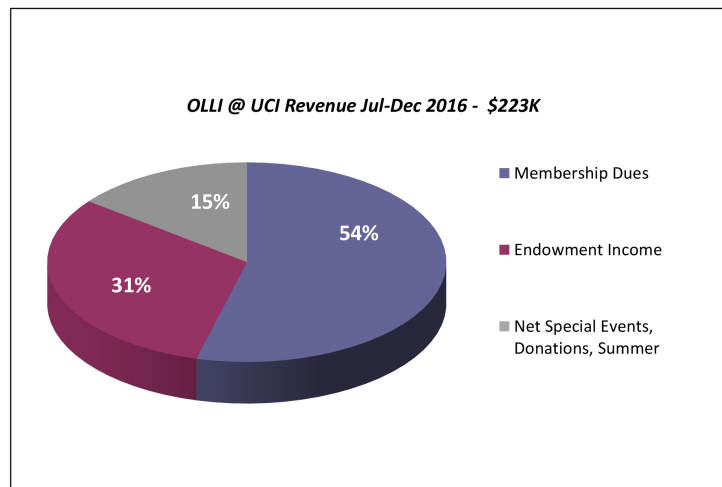
Minutes

The Minutes of the March 22, 2017 Board of Directors' meeting, to be approved at the April 26, 2017 meeting, are posted in the Irvine Station classroom, and on the OLLI blog.

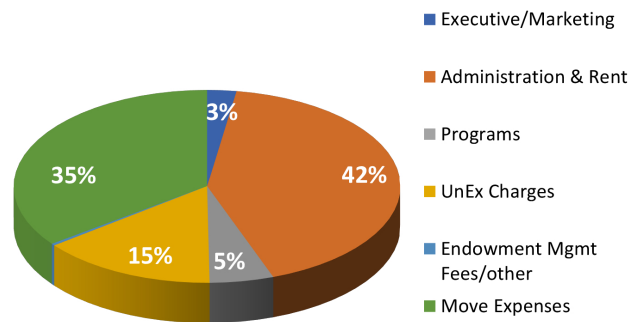
Donors

The donors list through January 2017 is posted on the OLLI bulletin board at the entrance of the Irvine Station-Onken classroom and on our blog. Click [here](#) to go to the blog and then click on *Thank you for giving*. Thanks to all who participate in helping OLLI at UCI retain the ability to offer the programs we enjoy. An updated list will be posted in the May Outlook.

Treasurer's Report



OLLI @ UCI Expenses Jul-Dec 2016 - \$191K



Income & Expenses July 2016 thru Dec 2016

March 25, 2017

REVENUE	Actual	Per member
Membership Dues	\$120,500	\$184.82
Endowment Income	\$69,916	\$107.23
Net Special Events, Donations, Summer	\$32,465	\$49.79
TOTAL REVENUES	\$222,881	\$341.84

EXPENSES

Executive/Marketing	\$4,641	\$7.12
Administration & Rent	\$80,052	\$122.78
Programs	\$10,200	\$15.64
UnEx Charges	\$28,000	\$42.94
Endowment Mgmt Fees/other	\$630	\$0.97
Move Expenses	\$67,037	\$102.82
TOTAL EXPENSES	\$190,560	\$292.27

Net Income/(Loss)**1/2 expenses pd. \$32,321

w/ full-year member income recorded

Dues income: 520 Yearly Members,
132 Semester Members

OLLI Treasurer Analysis:

Our fiscal year runs from July 1 through June 30.

Revenues:

Membership and endowment revenues as of December end, were \$190.4K (\$120.5K plus \$69.9K) and are projected to meet our plan for the year.

Endowment income is interest earned from the Osher and Onken one-time donations,

and a special one-time \$25K FY2016/2017 Growth Grant.

Special event and donations revenue of \$32.5K at the end of December means we need to collect \$20.2K from members between January and June 30.

Expenses:

Executive/Marketing expenses of \$4.6K is for production and postage of marketing materials.

Administrative and Rent of \$80.1K (\$13.3K/month) includes rent and utilities for our classroom/office, salaries for two part-time office managers, and miscellaneous supplies.

Program expenses of \$10.2K covers catalog production and printing for Fall 2016 and part of Spring 2017.

UnEx Charges of \$28K is OLLI's cost for IT, phone and support services provided by UCI Division of Continuing Education.

Endowment Mgmt Fees/Other of \$0.6K are additional support fees paid to UCI.

Move expenses incurred through December end were \$67.0K, with an additional \$2.5K expected through the end of year.

Move expenses were costs of the new Irvine Station Classroom, including tenant paid improvements and A/V equipment.

Net Income:

Net income was a positive \$32.2K. **The surplus is due to revenue from annual members received at the beginning of the year, with only half of the expenses paid Meeting a break-even outlook for the fiscal year depends on an additional \$20.2K in donations before June 30.

Respectfully submitted,
Sherri Nussbaum, Treasurer
OLLI @ UCI

OLLI INFO

Check the weekly KIT Mail for availability in that week's classes.

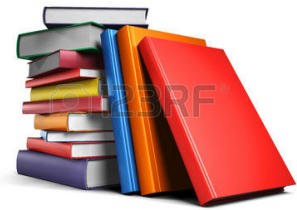
Members may now enroll in additional courses if space is available. Go to our website at www.ce.uci.edu/olli to enroll online or call 949-824-5414. You may also *walk in* to classes with space available without pre-registering. In addition note the following:

- Please do not park in the 90-minute spots for a two-hour class. You could get a ticket! There is always plenty of parking on levels three and four of the parking structure, with nearby elevators.
- Please reserve the use of the single bathroom in the office for those with a disability. The station bathrooms are only a one-minute walk away!
- Let the office know if you have any problems accessing the classroom or if you have special hearing or vision needs. We may be able to help.

READERS ALERT:

Look for details coming soon for a

**Summer Book Exchange Extravaganza
for OLLI members and friends**
as part of July's Summer Lite.



Facilitators Are Needed for the Fall Catalog!

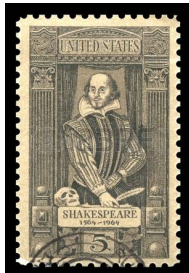
The Fall 2017 catalog is being readied for final approval! By May 24 it should be ready to be printed. Now is the time for you to volunteer to FACILITATE and be automatically enrolled in a course of your choice.

The schedule of courses and quality of presenters is absolutely . . . positively . . . the best ever!

Act NOW!! Contact Leah Jordan at her email: jordanLR@cox.net

Attention Music Lovers!

We have a Yamaha baby grand piano in our OLLI classroom which needs playing! If you have any ideas on using it, please email Meredith Cheston at meredith359@gmail.com



Are You One of OLLI's Fans of Shakespeare?

Interested in joining OLLI members in a Shakespeare Reading Group in the Fall? If so, contact Meredith Cheston at meredith359@gmail.com

Sunday, April 30: Director's Voice III - *I Dream of Chang and Eng* in the Robert Cohen Theatre

All OLLI tickets sold out immediately! There is a waiting list of 11 people at this point. If you were one of the lucky ones to get a seat and will not be able to attend, please contact one of the facilitators to let them know.

The UCI Box Office may still have a limited number of tickets for some shows.
Call 949-824-2787 to check for availability. Seniors get a discount on tickets.

Our amazing Director's Voice Productions on Sundays at the UCI campus still has seats available for:

Avenue Q (SE 65) June 4

You can register on the OLLI website. Go to <https://ce.uci.edu/olli> and click on

Enroll Online Now, or call 949-824-5414. Guests are welcome, but they must register by phone.

Thank you so much for your continuing support of the UCI Drama Department and their productions. The faculty and the students truly love the OLLI audiences.

Bobi Keenan
OLLI Liaison to UCI Drama Department

TRIPPING WITH OLLI

See the full descriptions of the following trips in the Special Events section of the 2017 Spring Catalog.



Guests are welcome!

The following still have space:

SE 58	"New" Nixon Library and Museum	May 10	\$69
SE 59	Lyon Air Museum Tour	May 22	\$20
SE 60	Aquarium of the Pacific, Harbor Cruise	May 24	\$75
SE 61	Eclipse Filter-Making Workshop	May 26	\$21

Travel With OLLI

Check out the 2017 trips on page 29 of the Spring Catalog.
For information, contact Leslie Barnebey at dr.barnebey@att.net.

Possible Trips for 2017:



- The Canadian Rockies in June, coming up soon!
- Philadelphia and the Poconos in the fall
- America's Musical Cities in December

OLLI EXTRAS

Movie Talk

Please extend an invitation to anyone who may be interested. The next meeting is **April 8, 10:30 AM**, at the Irvine Station. No reservation required. Contact: Jessie Tromberg at jzt1@cox.net.



Spanish Conversation Moves About!

Spanish Club will meet on **Friday mornings from 9:45 to 11:30 AM**. New members are always welcome. For information on locations, contact Sue Mendizza at [mendizza@cox.net](mailto:mendizsa@cox.net).

Mah Jongg

Mah Jongg Drop-In every **Tuesday 1:15 - 4:30 PM** at the Irvine Rancho Senior Center, 3 Ethel Coplan Way, Irvine. For information contact Flo Zysman at flozysman@icloud.com.

Travel Talk.

On **Saturday, April 22, at 10:30 AM**, we travel to Iran, a rare trip for Americans in today's political climate. New member Christine Dickey will share her journey at the Irvine Train Station. Members and guests welcome! For more information, contact Lonnie Horn at mail4lonnie@aol.com or Jessie Tromberg at jzt1@cox.net.

OLLI's Gastronomer's Group

2017 promises delicious food experiences planned and executed by members. Want to join? Let us know! Contact Toni Dwyer at radatoni@cox.net.



New Ideas

The second meeting of **Productive Discussion**, to talk about the current state of the union, will meet **Saturday, April 15, 10:30 AM** at the Irvine Station. We will discuss, inform and share effective ways to be good citizens. All are welcome to this informal get-together; if you care to join us please contact Suzanne Goldman at mrs2u@gmail.com or Elfie Glaubitt at eglaubitt@cox.net.

OLLI Extras is also seeking Backgammon players. In addition, several new members wish to get together and discuss Life After Work. For further information on these ideas or to come up with a new one, contact Jessie Tromberg at jzt1@cox.net.

INQUIRING MINDS

Critical Eye: Movie Reviews



KONG: SKULL ISLAND

It's too big to be ignored! This version, set in 1973, is filled with scenes of and references to the Vietnam war, the Nixon Presidency (note the bobble head doll), Conrad's novel, *Heart of Darkness*, and Coppola's film, *Apocalypse Now*.

Kong himself has been streamlined, but is still toweringly powerful, maybe a bit more empathetic. It's also hard to resist the likes of Tom Hiddleston, Samuel L. Jackson, and Brie Larson. Yes, it's loud, some of the dialogue is lame, but it's a connector in a way to our past and is definitely a blockbuster event.

BEAUTY AND THE BEAST

As the song goes, "tale as old as time"... This version lives up to its hype - pleasing,

engaging, tunefully enchanting. It's a great escape from the tortured world we all live in. This lush Disney production with a few tweaks could almost become opera. Nice casting with plain/pretty Emma Watson, Kevin Kline, glorious voiced Audra MacDonald and wildly wiggled Stanley Tucci. See it with or without kids.

Jessie Tromberg, jzt1@cox.net.

OLLI Outlook welcomes member reviews--film, book, theater, exhibits--and will publish when space permits. See contact information for submission directions.

Library News

Thank you so much for donating to the OLLI library. Without you, the library wouldn't be as great as it is. Unfortunately, we cannot accept magazines or other periodicals for our collection.



We are pleased to have the DVD used in the Fall 2016 class *The Addictive Brain* donated to the library. If you enjoyed the classes and want to see them again or if you missed the entire course, you have the opportunity to review the material. The convergence of psychology and neuroscience has led to a new understanding of the specific changes in the brain associated with addiction.

Also, learn how to become an expert stargazer with another donation. The *Night Sky* features twelve lectures that teach the science, culture, technology and pleasures of stargazing.

Lynne Pendleton
OLLI Librarian
lgpendl@gmail.com

UCI CAMPUS EVENTS

UCI TODAY

Click [here](#) to view current information on events and activities at any of the UCI schools. On opening this site, you will find events for the current date, but just scroll down to a box on the right and you can choose to see events for the month.



OLLI Volunteers STILL Needed!

A two-hour study in UCI's Department of Psychology and Social Behavior needs 40 senior volunteers who will receive \$40 compensation. If interested, please email emotion@uci.edu or call 949-824-3991 to leave your phone number. This study will be conducted at UCI's main campus. **For more information, look on the Social Science bulletin board.**

UCI's "Editathon" for Wikipedia open to OLLI Members

Friday, April 7, 1-5 PM at Humanities 1341.
Questions? Contact Antoinette LaFarge

at alafarge@uci/edu
Identify yourself as an OLLI member.

Illuminations Series

Click [here](#) for more information about UCI's Illuminations Series.

NTL Screening: Hedda Gabler - Broadcast in HD from London

A Modern Production of Ibsen's Masterpiece
Tuesday, April 11, 6:30 PM - \$17-\$22 - Barclay Theater

Click [HERE](#) for details.

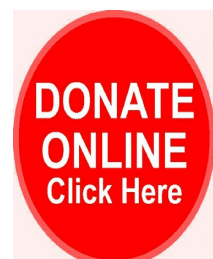


OLLI BOARD OF DIRECTORS

President	Pat Linehan
V. P. Administration	Carolyn Brothers
V. P. Programs	Linda Saperstein
V.P. Member Services	Al Glasky
Secretary	Sara Schoenfelder
Treasurer	Sherri Nussbaum
Director, Organizational Development	Mike McGovern
Director, Volunteer Development	TBA
Director, Special Projects	Leslie Barnebey
Director, Parliamentary Procedures	Leah Jordan
Liaison, UCI Division of Continuing Education	Kirwan Rockefeller
Office Managers	Barbara Barone and Karen McKenzie

We Need Your Help!

OLLI depends on our members to ensure the range and quality of our courses and extra offerings. We are a volunteer organization and are dependent on our members for funding. Please give what you can to keep OLLI strong. Thank you! Click on the link to donate online: [Donate Online](#)



STAY CONNECTED:

