

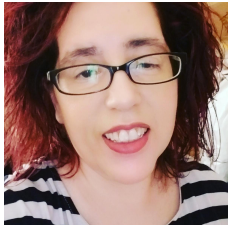


at University of California, Irvine

KIT (Keep in Touch) Mail from OLLI at UCI

**Monday,
September 21, 2020**

Meet Stacy Calzada



Welcome to the OLLI at UCI office team, Stacy!

Stacy Calzada, an Administrative Analyst at UCI Division of Continuing Education, will be assisting Barbara Barone, OLLI Office Manager, with OLLI office duties. Stacy graduated from UCI in 2000. Since then, she has worked at UCI as a Program Representative in the Arts and Humanities department, and later moved into the role of Administrative Analyst supporting Student Services with student registrations and room scheduling.

Fall Classes Start This Week

**Welcome to our new and returning members!
Classes will be live streamed via the
[Remote Learning Center](#).**

**You can access the Remote Learning Center by
opening your internet browser and typing
olli.ce.uci.edu.**

New members, you will need to create an account to use the Remote Learning Center. To get started, go to olli.ce.uci.edu and click **Register**. Complete the registration form and enter the unique **Membership ID number which was sent to you last week in a separate e-mail, along with instructions for setting up your account, viewing live streamed classes, and accessing the library of recorded classes**. Your Membership ID number starts with the letter 'M'.

Returning members, if you already created an account for the Remote Learning Center, you can use the same log in and password as you used in the Spring and Summer terms. If you are a returning

member, but have not yet created an account for the Remote Learning Center, you will need to create an account to watch live streamed classes.

Need assistance creating your Remote Learning Center account and using the Remote Learning Center?

Watch these helpful videos:

- Video "How to Set Up Your Remote Learning Center Account": [Click Here](#)
- Video "How to Use the Remote Learning Center": [Click Here](#)

Read this helpful step-by-step document:

- "How to Set Up Your Remote Learning Account": [Click Here](#)

Still have questions?

E-mail us at olli@uci.edu or call us at 949-451-1403.

Important Fall Class Notices

Cancelled Classes:

- **Modern Armenian History (SS 302)** originally scheduled for Tuesdays, September 22 and 29, 10:00 AM - 12 Noon.
- **Exploring Mars: Nasa's InSight Lander Mission (SC 202)** originally scheduled for September 28 and moved to October 1 from 10 AM - 12 Noon.
- **Separation of Powers Doctrine (SS 304)** originally scheduled for Tuesday October 6, 9:30 - 11:30 AM.

New Classes Added:

- **Educate Your Ear (AH 110)**; Monday, September 21; 1:30-3:00 PM.
- **Independence Corrupted: How America's Judges Really Make Their Decisions (SS 312)**; Tuesday, October 6; 9:30 -11:30 AM.
- **Current Issues Forum: Pandemic Positivity (SS 313)**; Thursday, October 8; 1:00 - 3:00 PM.

Classes Livestreaming this Week

AH 110 - EDUCATE YOUR EAR
It Will Change the Way You Hear Music
Monday, September 21

1:30 - 3:00 PM

Click [HERE](#) to attend this class.

This music appreciation class will examine the works of Inside Tchaikovsky's Fifth.

Presenter: Marek Zebrowski, a pianist, composer, and director of

SC 201 - THE REPLICATION CRISIS IN THE NATURAL & SOCIAL SCIENCES

Tuesdays, September 22, 29; October 6
1:30 – 3:30 PM

Click [HERE](#) to attend this class.

This class examines the problem of replicating research results in the physical and social sciences. Although failure to reproduce findings has always been an issue, recently this has become a crisis in the fields of psychology and medicine.

September 22: The meaning of “replication” and some prominent examples of irreproducibility, focusing on why this is a concern in psychology and medicine.

September 29: Systematic studies in psychology where research results have been questioned and cases of fraud or failures occurred.

October 6: We identify proposed solutions and discuss methodology, statistics, publication policies, and institutional incentives.

Presenter: Stanley Woll, Ph.D., Professor Emeritus of Psychology at Cal State Fullerton

SS 301 THE STATE OF ORANGE COUNTY VETERANS

Wednesday, September 23
10:00 AM – 12:00 Noon

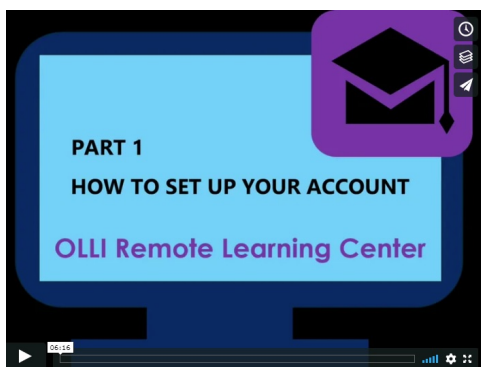
Click [HERE](#) to attend this class.

Orange County veterans have served our country and put their lives on the line, only to struggle when they returned to civilian life. A study done by the USC School of Social Work in 2015 surveyed OC veterans about their transition out of the military and issues with employment, housing, health care and available services. These results will be presented along with how the community responded.

Presenters:

Bob Greenberg, Chair of Strength in Support, a non-profit serving veterans and their families.

Chase Wickersham, member of Orange County Veteran’s Advisory Council, former Director, Veteran Services at Goodwill, former VP of US Vets in Los Angeles.



Create an Account for the Remote Learning Center

I don't have an account for the Remote Learning Center.

An account is needed to watch live streamed and pre-recorded class lectures.

To create your account, you will need your **Membership ID** number. This number begins with the letter 'M'. If you don't have your membership number, send an email to olli@uci.edu.

Ready to create your account?

Click [OLLI Remote Learning Center](#) to begin setting up your account and click the Register button under New User.

Watch the instructional video above on setting up your account for the OLLI Remote Learning Center.

Still need help?

If you still need assistance, call the OLLI office at 949-451-1403, Monday - Friday, 9 AM - 2 PM



Using the Remote Learning Center

I've already created my Remote Learning Center account.

If you have already set up an account, click [OLLI Remote Learning Center](#), and click the blue Login button under Returning User. Enter the e-mail address and password you used to create your account. Then, click on the red bar titled, *View OLLI Classes Live TV*, to join the live classroom presentation. You may even join after the class starts.

What if I miss the live class lecture?

Most lectures will be recorded and available for later viewing. The video library contains over 400 pre-recorded class lectures from the current and previous terms.

Watch the instructional video above if you need more help using the Remote Learning Center.

Still need help?

If you still need assistance, call the OLLI office at 949-451-1403, Monday - Friday, 9 AM - 2 PM

OLLI Extras

Let's Talk Wine

Join us via Zoom this **Thursday, September 24 at 4 PM** to discuss *Wines of Oregon and Washington*. Please bring a bottle and be prepared to say something about the region, winery, wine and to show the bottle. Check *Wine Enthusiast* for a rating and also Yelp for comments on the winery. Grab a glass and come join us! **Reply to this e-mail if you are interested in joining us.** Free to all members and guests!

Joan K. Lutz, Moderator

Brain Teasers

Here are the answers to last week's brain teasers:

"Who makes it has no need for it. Who buys it has no use for it. Who uses it can neither see it nor feel it. What is it?" **Answer: A coffin**

"What has to be broken before you can use it?" **Answer: An egg**

"Forward I'm heavy; backwards I'm not" **Answer: A ton (*not backwards*)**

Connect with Your OLLI Friends Through Our Facebook Group!

Join our members-only Facebook group where we can virtually connect to talk about books, movies, recipes, hobbies and more! **Simply reply to this e-mail to let us know if you want to join, and we will send you an invitation!**

Send a free OLLI catalog to a friend.

Click [here](#) if you would like to mail a free Fall catalog to a friend.

Contacting Us

At the direction of UCI administration, OLLI staff will be working remotely until further notice. You can still reach us at olli@uci.edu or 949-451-1403, Monday-Friday, 9 AM-2 PM. Please do not come in to the OLLI office; it will be closed.

Contact Information

Phone: 949-451-1403

E-mail: olli@uci.edu

Office and Classroom Address

Website: ce.uci.edu/olli

Map

[Click here to view a map of our location](#)

**15207 Barranca Parkway
Irvine, CA 92618**

We are located at the corner of Ada and Barranca, next to the Station Café and facing Ada. We are on the ground level of the multi-level parking garage.

VISIT US ON FACEBOOK

