



at University of California, Irvine

KIT (Keep in Touch) Mail from OLLI at UCI

Monday, November 1, 2021



Greetings OLLI Members!

OLLI at UCI is part of the Bernard Osher Foundation, which is headquartered in San Francisco and founded in 1977. The foundation "seeks to improve quality of life through support for higher education and the arts" as well as provide support for OLLI programs to "125 colleges and universities from Maine to Hawaii and Alaska." To learn more about The Bernard Osher Foundation click [here](#).

If you missed any of the past classes, you can view the recordings through your [OLLI Remote Learning Center](#) account. Please note that classes will be available to view within 5-7 business days after the class.

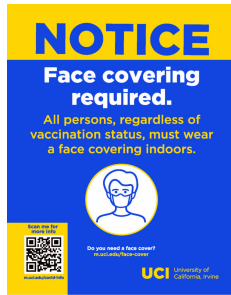
We're looking forward to a full week of learning together!

OLLI at UCI

FANTASTIC FEEDBACK FROM OLLI MEMBERS!

- **"We enjoyed your class! It was hard not to get up and dance! Thanks."**
 - *OLLI Member in response to: The 1930's: The Age of Contrast*
- **"Wonderful presentation by well qualified speaker. Learned very much! Thanks so much."**
 - *OLLI Member in response to: Alzheimer's Disease and Experimental Therapies*
- **"He is a very enjoyable speaker. Easy to listen to. I appreciate his sense of humor. Highly entertaining! I hope he'll come back. I'd like to hear more."**
 - *OLLI Member in response to: The Historical Development of Watercolor*

OLLI AT UCI



As a reminder: Face Coverings are still required to participate in all classes and special events. If you are unable to wear a face covering, or are currently experiencing COVID related symptoms, please attend class online through the OLLI Remote Learning Center. No one will be permitted in the OLLI classroom without a face covering per UCI guidelines.

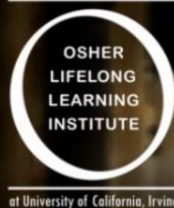
ENROLLMENT FOR FALL CLASSES: STILL OPEN!

Click [here](#) to view our Fall Session Catalog.



To add or drop any course, or sign up for special events, please log on to your OLLI at UCI account [here](#). Or, call UCI-DCE Student Services at: 949-824-5414. Press #1 to speak to a staff member.

Most of our class lectures (unless otherwise indicated) will be recorded and available to our members for later viewing through the OLLI Remote Learning Center (ORLC) secure website. If you miss an in-person class lecture, you can still watch the class live streamed or watch a recording of the class at a later date through the ORLC.



OLLI Remote Learning Center

OLLI REMOTE LEARNING CENTER (ORLC)

New Fall Members

To view online classes, you will need to create an account for the [Remote Learning Center](#).

Returning Members

If you already created an account for the [Remote Learning Center](#), you can use the same log in and password.

Need Assistance?

Click [here](#) for links to helpful videos and instructions on how to create an account for the Remote Learning Center and How to Use the Remote Learning Center.

WEEKLY SCHEDULE



Upcoming Classes

CLASS FORMAT LEGEND:

A: Classroom ONLY (Presenter and Audience attend in person)

B: Hybrid with Presenter in person (Audience attend in person or via Zoom)

C: Hybrid with Presenter remote (Audience attend in person or via Zoom)

D: Zoom ONLY (Presenter and Audience attend via Zoom)

SC208

Class Format C

**POPULATION MODIFICATION OF
MOSQUITO VECTORS FOR MALARIA CONTROL**

Monday, Nov 1

10:00am - 12:00pm

Mosquitos have been described as the deadliest animals to humans because of the diseases they transmit including malaria, dengue fever and viral encephalitis. New technologies, some with novel genetic approaches, are being developed to control the transmission of the pathogens responsible for these diseases. This lecture will describe the application of so-called “gene drive” systems to control the transmission of malaria parasites.

Presenter: Anthony A. James, Ph.D., Donald Bren Professor and Distinguished Professor of Microbiology & Molecular Genetics (School of Medicine) and Molecular Biology & Biochemistry (School of Biological Sciences) at University of California, Irvine.

AH 102

Class Format A (Closed)

AMERICAN SHORT STORY MASTERPIECES

Monday, Nov. 1

1:00pm - 3:00pm

This six-class series is a fun, interactive adventure in reading and discussing

renowned American short stories. Participants choose a favorite story from the text, develop questions, and lead the discussion. Sample discussion questions will be available.

Note: *Enrollment limited to 20. This class will not be recorded for later viewing.*

Developers/ Discussion Leaders: Judy Strauss and Noel Humphries are experienced book group leaders.

AH 110
Class Format B
SONGS, STORIES AND POETRY
ACROSS AMERICA
Tuesday, Nov 2
10:00am - 12:00pm

Our journey begins in California with San Francisco's Beat poets and in the Sierras with John Muir's words of wisdom. Then on to Montana for cowboy poetry, Chicago with Carl Sandburg, Louisiana for jazz and zydeco, the Appalachians and the South for bluegrass and Country Western music. We progress to New Jersey with the poetry of William Carlos Williams and to New York with poet Billy Collins. We end our journey in New England with poets Emily Dickinson and Robert Frost.

Presenter/Developer: Meredith Cheston for many years, has developed and presented numerous OLLI classes in music, art, and literature.

AH 106
Class Format D (Closed)
INTERNATIONAL SHORT STORIES
Tuesday, Nov. 2
1:00pm - 3:00pm

This six-week class is an interactive adventure in reading and discussing works by acclaimed short story writers from around the world. Class volunteers select a story from the text, develop questions and lead the discussion.

Note: *Enrollment limited to 20. This class will not be recorded for later viewing.*

Discussion Leader/Developer: Gail Rothman, experienced book group leader.

SS 305
Class Format C
THE RENAISSANCE: AN INTEGRATIVE REVIEW OF
PAINTINGS AND SCULPTURES

**Wednesday, Nov. 3
10:00am - 12:00pm**

We usually study the arts without an understanding of the societal and political conditions at the time of their creation. In this course, we will review the way of life from which the artists and their creations emerged by looking at the major factors that molded them, including societal structure, economics, religion, philosophy, politics, and mores. We will review and discuss the paintings and sculptures of Florence, Venice, Genova, and Rome in Italy, the Flemish and Dutch in the Low Countries, and German principalities of the time.

Presenter: Edgar M. Moran, M.D., Emeritus Professor of Medicine, UCI.

**SS 306
Class Format C
ANTI-SEMITISM: TYPES OF SEMITISM
RELIGIOUS, ECONOMIC, SOCIAL, AND POLITICAL
Wednesday, Nov. 3
1:00pm - 3:00pm**

Anti-Semitism has existed for more than 3,000 years, causing serious upheavals and human disasters. We will review and discuss several major causes in an objective and dispassionate way. It is important to know the history of anti-Semitism in order to fully understand its causes, dynamics and impacts. Many forms of anti-Semitism have existed across the globe and throughout history.

Presenter: Edgar M. Moran, M.D., Emeritus Professor of Medicine, UCI

**SC 209
Class Format C
THE NATIONAL ACADEMIES OF SCIENCE, ENGINEERING,
AND MEDICINE: CHAMPIONS FOR GOOD SCIENCE,
GOOD POLICY, AND YOU
Thursday, Nov. 4
10:00am - 12:00pm**

The NASEM's behind-the-scenes, objective work on behalf of our country is staggering in breadth and depth yet the Academies are unheralded and little-appreciated. This informal talk, based on the speaker's decades of National Academy of Medicine membership, will present a taste of surprising history along with organizational fundamentals such as funding, budget, staffing and membership. You will learn about the Academies' *modus operandi*, integrity, activities, and impact and you will hear a couple of shocking stories.

Presenter: Linda Hawes Clever, M.D., is a member of the National Academy of Medicine and past-chaired its Committee on Personal Protective Equipment.

AH 104
Class Format B (Closed)
BRUSH UP YOUR SHAKESPEARE
Thursday, Nov. 4
1:00pm - 3:00pm

Almost 400 years from publication of Shakespeare's First Folio in 1623, Shakespeare's plays remain a staple in education curriculum and theatre productions. Join this interactive group in reading aloud a play of our choosing, discussing the characters, plot, and major themes. Woven within this interactive reading will be a discussion of the political and social environment of the period. Our discussion will enlighten Shakespeare's intent.

Note: Enrollment limited to 20. This class will not be recorded for later viewing.

Presenters/Developers: Beth Mersch and Mitchell Samuelson have participated in this class over several years.

SC 210
Class Format B
BEACH SCIENCE
Friday, Nov. 5
1:30pm - 3:30pm

Have you ever considered how beaches are created and why they change over time? In this class, we will discuss many aspects of sand, waves, tides, sea level, and erosion. You will be amazed at what you learn, even without a background in science! The next time you walk on the beach anywhere in the world, but especially in Southern California, you will see something new.

Presenter: David Larue is a Ph.D. geologist from Northwestern University. He has taught a previous OLLI class on OC geology, and at Stanford University, the University of Puerto Rico, and the Oasis Senior Center. He also worked as a petroleum geologist. He is very passionate about his teaching!

**Important
Class Notices**



AH 112
THREE BLACK AMERICAN ARTISTS TO CELEBRATE

Change of Date Notice

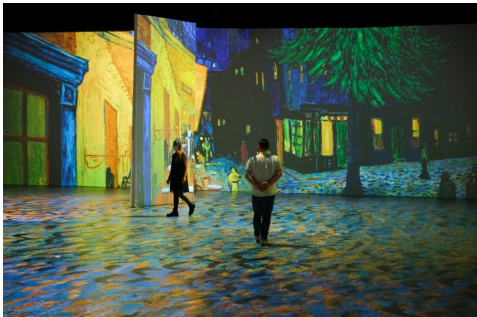
Previously schedule class on Tuesday, November 23rd has been moved to Tuesday, December 7th. **There will be no class held on the November 23rd.**
Please note the addition of class on December 7th.

OLLI Special Events

Register Now!

ALL Special Events are open to Non-Members, too!

To register non-members, call UCI-DCE Student Services at: 949-824-5414. Press 1 to speak to a staff member.



Immersive Van Gogh
Wednesday, November 3, 2021
Departs from ITC at 8:30am;
Returning to ITC at 3:30pm

Imagine being surrounded by the glory of Van Gogh's paintings as you experience this world famous multi-media event. The walls, ceilings and floor of the huge venue are covered with Van Gogh's art accompanied by classical music. As you stroll through the space, you will feel as if you have stepped inside the paintings.

Price: \$90.00 (admission and bus) Lunch is on your own at the Farmer's Market

Facilitator: Linda Vine, email: vines1219@gmail.com

Registration: To register click [here](#).

Maximum: 55 (9 remaining tickets left.)

Curriculum Committee

Meeting Schedule

You're invited to meet our curriculum chairs and course developers to audit how OLLI members like yourselves develop the courses you love. *Email the appropriate committee person to join the Zoom meeting.*

November 2021 Committee Meeting Schedule:

Arts & Humanities Committee

Special Events Committee

Email Beth Mersch at
beth.mersch@gmail.com
Wednesday, Nov. 17 (2:00PM)

Finance Committee

Email Sherri Nussbaum at
sherrilynn@audiblerush.com
Monday, Nov. 22 (12 PM)
Click [here](#) to join Zoom meeting.
Meeting ID: 936 3476 7503
Password: *finance*

Email Linda Vine at
vines1219@gmail.com
*No November meeting. SE
Committee meetings will resume in
January 2022.*

Social Science Committee

Email Mel Roth at
melroth721@gmail.com
Wednesday, Nov. 10 (10:00PM)
Thursday, Nov. 11 (12:15PM)

STEM Committee

Email Marj Besemer at
mlbesemer@cox.net

CONTACTING US



OLLI at UCI

Office hours: 9:00am - 4:00pm

Irvine Train Station
15207 Barranca Pkwy
Irvine, CA 92618

Phone: 949-451-1403
Email: olli@uci.edu
Website: ce.uci.edu/olli

VISIT US ON FACEBOOK

