



at University of California, Irvine

KIT (Keep in Touch) Mail from OLLI at UCI

Monday, April 18, 2022

OLLI members enjoy UCI campus benefits with their memberships!

From behind scenes theatre performances in our [special events](#) offerings (see Director's Voice III below), to free music concerts from the [Claire Trevor School of Arts](#) (links in last weeks KIT), free [UCI Libraries](#) events, free webinars through the [Division of Continuing Education](#), and free [UCI Illuminations](#) events from the Chancellor's Art and Culture Initiative, OLLI at UCI members are welcome to attend many campus events for FREE as a current member!.

If you have enjoyed the "World's Religions Study" class the past few semesters, you may find interest in the UCI Illuminations event, "Buddhism & Science" hosted by [UCI Phi Beta Kappa](#), with a personal invitation to our OLLI members! To learn more about this event and to register, click [here](#).

Stay curious!

OLLI at UCI




FANTASTIC FEEDBACK

- **"David Feldman is so interesting and so well organized. Very important information! Well-done presentation!"**
 - *OLLI member in response to: Impacts of Climate Change and Aridification: Water*
- **"It's always nice to have a teacher who knows his subject and is enthusiastic."**
 - *OLLI member in response to: Mechanics of R&R and Blues Chord Progressions*
- **"Absolutely wonderful. Learned a lot and really enjoyed!!"**
 - *OLLI member in response to: Argentina: The Tango and the*

- "Thank you Meredith for this & all of your enjoyable music classes. Fun to learn & enjoy!"
 - OLLI member in response to: *Argentina: The Tango and the Perons*

SPOTLIGHT ON UPCOMING CLASSES STEM (Science, Technology, Engineering, & Mathematics)

(Click on image to register)




IMPACTS OF CLIMATE CHANGE AND ARIDIFICATION

SC 206

The release of the IPCC 6th Assessment Report (AR6) was a wake-up call that the climate is warming at an accelerated level. One significant finding is that areas with climates like California are becoming more arid. This class will present several experts knowledgeable on the serious impacts that we are experiencing today, and the possible expectation for a worse future. Is it inevitable?

Presenters:

April 6: David Feldman, Professor of Urban Planning and Public Policy and Political Science, Director of Water, UCI
April 20: Eric Rignot, Professor, UCI ESS, JPL Scientist
April 22: Greg Woodside, Exec. Dir. of Planning and Natural Resources, OC Water District
April 29: Francois Primeau, Professor, UCI ESS
May 6: James Randerson, Cicerone Professor, UCI ESS.



LECTURE SCHEDULE

- **Water**
Wednesday, April 6
10AM – 12PM
- **Ice Sheets and Sea Level**
Wednesday, April 20
10AM – 12PM
- **OC Water Supply**
Friday, April 22
1:30PM - 3:30 PM
- **Oceans**
Friday, April 29
10AM – 12PM
- **Wildfire Outlook**
Friday, May 6
1:30 - 3:30 PM

LIVING WELL: AORTIC ANEURYSMS

SC 208

Wednesday, April 20

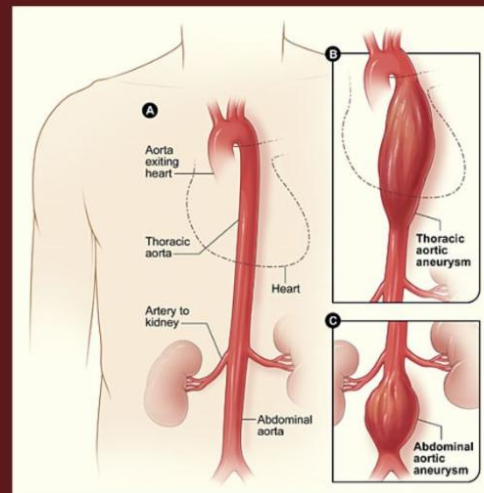
1:30 PM – 3:30 PM

In this presentation we will learn about aortic aneurysms including the definition of aneurysm, who is at risk, what can be done to prevent them, how they are treated, how to recognize features of a rupture, screening and surveillance, and criteria for repair.



at University of California, Irvine

Presenter: Nii-Kabu Kabutey, M.D., Associate Professor and Chief in the Division of Vascular and Endovascular Surgery, Department of Surgery at the UCI School of Medicine at UCI Health.



THE EFFECTS OF SCIENCE ON SOCIETY

SC 209

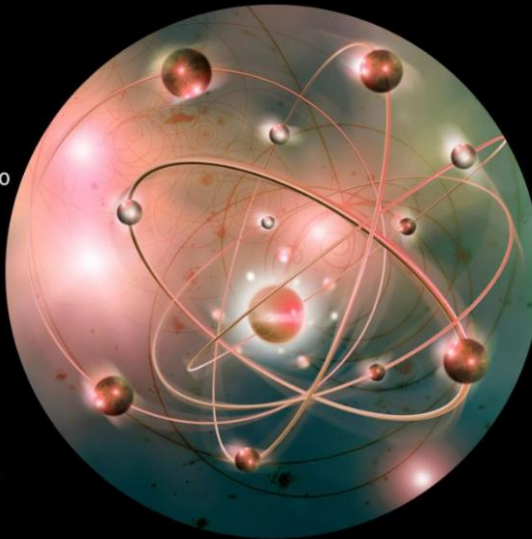
Wednesdays, May 4, 11, 18

1:00 PM – 3:00 PM

How empirical inquiry can lead to radically new ways of understanding the world. From quantum mechanics to understanding false beliefs to how space and time are related.

Presenters:

- May 4: Jeff Barrett, Ph.D., UCI Chancellor's Professor of Logic & Philosophy of Science, Quantum Mechanics and Society
- May 11: Caillin O'Connor, Ph.D., Associate Professor, Dept. of Logic and Philosophy of Science
- May 18: JB Manchak, Ph.D., UCI Professor of Logic and Philosophy of Science



LECTURE SCHEDULE

- May 4
Quantum Mechanics and Society (Barrett)
(This class will not be recorded)
- May 11
Understanding the Persistence of False Beliefs & Misinformation
- May 18
Space and Time - Can There Be Time Travel



at University of California, Irvine



OLLI at UCI INFORMATION



Get Involved *contribute* Give Inspire *Teamwork*
help **VOLUNTEER at OLLI** *New Friendships*
connect **Purpose** Make a difference *DONATE Service*
community



at University of California, Irvine

Board of Director Positions:

- Secretary
- Vice President, Programs
- Director, Special Projects
- Director, Volunteer Coordinator

Volunteer on the **OLLI Board**
and you will get **one semester of OLLI membership for FREE!**

Current OLLI member volunteer needs:

- Library Coordinator
- Class Facilitators
- Gastronomers Chair
- Committee Members
- Social Science Chair
- STEM Co-Editor
- STEM Co-Chair

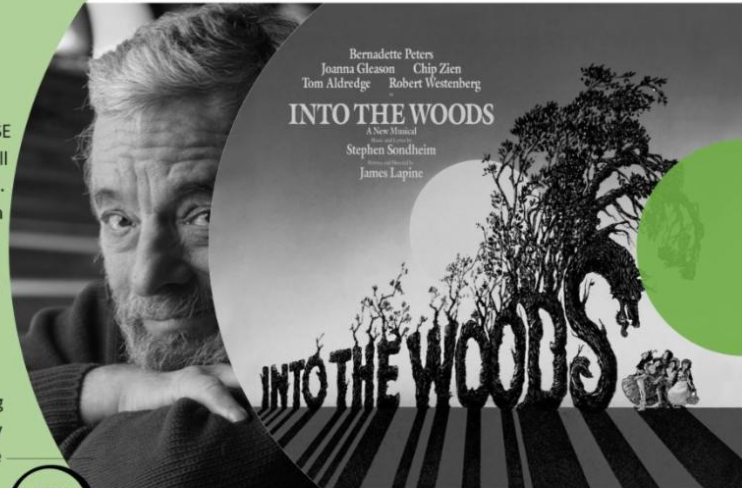
THE LEGACY OF STEPHEN SONDHEIM

AH 114

Thursdays, May 12, 26

May 12: In conjunction with SE 410, Don Hill, the Director of UCI's production of "Into the Woods" (SE 410) will entertain us by bringing his actors who will be singing songs from the upcoming musical at UCI. In addition, Professor Hill will be enlightening us on the themes and main elements of the musical.

May 26: This entertaining class will feature the life and works of the late great American musical theater writer, Stephen Sondheim, who is best known for his "Company", "A Little Night Music", "Into the Woods", "Sweeney Todd", "A Funny Thing Happened On the Way to the Forum", and "Sunday in the Park with George". The presentation will be enhanced by showing film clips of Sondheim's musicals and discussing their themes, by Meredith Cheston, an experienced presenter with OLLI.



<https://ce.uci.edu/olli/>

at University of California, Irvine

For more information or to register, click [here](#)

OLLI SPECIAL EVENTS

OLLI special events are open to both members and non-members, so invite friends! To register, go to your UCI student account [here](#), or click the links below. Non-members and members can also register by phone at: 949-824-5414 (press #1 to speak to a Student Services staff member M-Th, 9:00am-4:00pm).



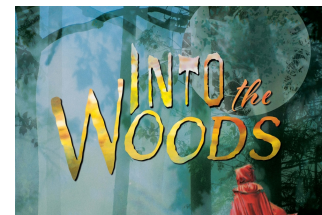
TANAKA FARMS: Farm to Table Cookout SE 408

Tuesday, May 10
10:00 AM - 1:00 PM
Cost: \$45.00
Register [here](#)
(33 tickets remaining)
Deadline: April 25



GETTY CENTER An Unforgettable Experience SE 409

Friday, May 20
8:15 AM - 4:00 PM
Cost: \$55.00
Register [here](#)
(15 tickets remaining)



DIRECTOR'S VOICE III Into the Woods SE 410

Sunday, June 5
1:00 PM - 4:45 PM
Cost: \$20.00
Register [here](#)
(20 tickets remaining)



at University of California, Irvine

OLLI Remote Learning Center

To view online classes, you will need to create an account for the [ORLC](#). If you have not receive your OLLI Membership ID, please email: olli@uci.edu.

If you already created an account for the [ORLC](#), you can use the same log in and video password that you created. If you have forgotten your (Video) password, the office can reset it, by emailing: olli@uci.edu.



Upcoming Classes

CLASS FORMAT LEGEND:

- A: Classroom ONLY** (Presenter and Audience attend in person)
- B: Hybrid with Presenter in person** (Audience attend in person or via Zoom)
- C: Hybrid with Presenter remote** (Audience attend in person or via Zoom)
- D: Zoom ONLY** (Presenter and Audience attend via Zoom)

Calendar at a Glance

Monday 4/18	Tuesday 4/19	Wednesday 4/20	Thursday 4/21	Friday 4/22
<u>10:00 AM</u>	<u>10:00 AM</u> AH 111 Format B	<u>10:00 AM</u> SC 206 Format B	<u>10:00 AM</u> AH 104 Format D (Closed)	<u>8:45 AM</u> SE 406 (Closed)
<u>1:00 PM</u> AH 103 Format A (Closed)	<u>2:00 PM</u> AH 112 Format B	<u>1:30 PM</u> SC 208 Format C	<u>1:00 PM</u> SS 302 Format A	<u>1:30 PM</u> SC 206 Format B

Class Descriptions

**AH 111
Format B**

**Shakespeare's
Sonnets: The Making
of a True Lover's
Mind
(Session 2 of 2)**

**Tuesday, April 19
10:00 AM - 12:00 PM**

“What’s in the brain that ink may
character / Which hath not figured to
thee my true spirit?”

Thus, Shakespeare tempts us to find him
— the man — in his sonnets, and we will
look for him in the following sessions.

April 19: We let the sonnets and some
special interpreters amuse us.

Presenter: Dr. Charles Spurgeon,
Professor Emeritus, Marymount
California University.

Evita and Juan Perón: Inventions of
History. Eva and Juan Perón have been
a constant presence in popular culture,
in Argentina and the world. While the
most popular account of Eva Perón is
the musical *Evita*, she’s had an
unprecedented impact on fiction in the
20th century. Our task will be to
distinguish between fact and fiction and
investigate how the Peróns invented
their history using fictional means.

Presenter: David Kelman, Professor of
English and Comparative Literature at
CSU, Fullerton.

**AH 112
Format B**

**ARGENTINA: The
Tango and the
Persons
(Session 2 of 2)**

**Tuesday, April 19
2:00 PM - 4:00 PM**

The release of the IPCC 6th Assessment
Report (AR6) was a wake-up call that
the climate is warming at an accelerated
level. One significant finding is that
areas with climates like California are
becoming more arid. This class will
present several experts knowledgeable
on the serious impacts that we are
experiencing today, and the possible
expectation for a worse future. Is it
inevitable?

Presenter: Eric Rignot, Professor, UCI
ESS, JPL Scientist

**SC 206
Format B**

**IMPACTS OF
CLIMATE CHANGE
AND ARIDIFICATION:
Ice Sheets and Sea
Level
(Session 2 of 5)**

**Wednesday, April 20
10:00 AM - 12:00 PM**

In this presentation we will learn about aortic aneurisms including the definition of aneurysm, who is at risk, what can be done to prevent them, how they are treated, how to recognize features of a rupture, screening and surveillance, and criteria for repair.

Presenter: Nii-Kabu Kabutey, M.D., Associate Professor and Chief in the Division of Vascular and Endovascular Surgery

**SC 208
Format C**

**LIVING WELL: Aortic
Aneurysms**

**Wednesday, April 20
1:30 AM - 3:30 PM**

**SS 302
Format A**

**CURRENT ISSUES
FORUM**

**Thursday, April 21
1:00 AM - 3:00 PM**

Click [here](#) for class agenda.

This course is a lively participatory group discussion of issues that are of current interest and will sometimes be controversial. It meets once a month to discuss current political, economic, and social developments taking place locally, nationally and around the world.

Attendees are expected to engage in the discussion and share different perspectives. Registered students will receive notice of the current topic one week before the meeting. Classes will be in classroom only with no recording.

Presenters/ Discussion Moderators/ Developers: Bob Greenberg, Mel Roth, Katherine Jones, Jaime Schvartsman, Yasmin Vali, and Mike Schlesinger.

The release of the IPCC 6th Assessment Report (AR6) was a wake-up call that the climate is warming at an accelerated level. One significant finding is that areas with climates like California are becoming more arid. This class will present several experts knowledgeable on the serious impacts that we are experiencing today, and the possible expectation for a worse future. Is it inevitable?

Presenter: Greg Woodside, Exec. Dir. of Planning and Natural Resources, OC Water District

**SC 206
Format B**

**IMPACTS OF
CLIMATE CHANGE
AND ARIDIFICATION:
Water Supply
(Session 3 of 5)**

**Friday, April 22
1:30 AM - 3:30 PM**

IMPORTANT CLASS NOTICES



CLASS FORMAT CHANGED

SC 208
LIVING WELL: Aortic Aneurysms
Wednesday, April 20
1:30 AM - 3:30 PM

Format changed from B to C (Hybrid with Presenter remote).

CLASS POSTPONED

SS313
Racial Capitalism
Monday, April 25
10:00 AM - 12:00 PM

Instructor Yousuf Al-Bulush has requested a postponement to the upcoming FALL 2022 semester. Please look for this class again in the next catalog. We're looking forward to hearing Dr. Al-Bulush's lecture in the coming months!

Rescheduled date is: October 17th from 10:00 AM - 12:00 PM. Please register when the FALL semester opens as you will need to re-enroll for this course.

Curriculum Committee

Meeting Schedule

You're invited to meet our curriculum chairs and course developers to audit how OLLI members like yourselves develop the courses you love. *Email the appropriate committee person to join the Zoom meeting.*

April/May 2022 Committee Meeting Schedules:

Arts & Humanities Committee

Email Beth Mersch at

Special Events Committee

Email Linda Vine at

beth.mersch@gmail.com

No scheduled meeting in May

Finance Committee

Email Sherri Nussbaum at

sherrilynn@audiblerush.com

Monday, April 25 (12 PM)

Monday, May 23 (12 PM)

Location: TBD

Marketing Committee

Email Linda Robinson at

robinson.linda@ymail.com

Thursday, April 21 (3:15 PM)

Thursday, May 19 (3:15 PM)

Location: Zoom

vines1219@gmail.com

No scheduled meetings until June

Social Science Committee

Email Mel Roth at

melroth721@gmail.com

No scheduled meeting in May

STEM Committee

Email Marj Besemer at

mlbesemer@cox.net

No scheduled meeting in May

UCI COVID-19 VACCINATION POLICY

OLLI at UCI COVID-19 VACCINATION REQUIREMENT

- OLLI will continue to ask members to provide proof of COVID-19 vaccination at the first class meeting or special event a member attends.
- To view UCI's Vaccination Policy, click [here](#).
- If a member (or guest) is not vaccinated, OLLI requests that they attend class online.



To add your digital State of California COVID-19 vaccination record to your phone, fill out the following form: <https://myvaccinerecord.cdph.ca.gov>

UCI COVID-19 MASK POLICY

**From the UCI Office of the Provost and Executive Vice Chancellor:
Hal Stern**

- **Face coverings will be recommended indoors, but not required, regardless of vaccination status.** Therefore, individuals should feel free to continue to wear face coverings if they desire. Face coverings are optional outdoors.
- **OLLI will continue to provide face coverings to those that request one.**



For the latest COVID-19 information, please continue to visit the [UCI Forward website](#).

CONTACTING US



OLLI at UCI

Office hours: 9:00am - 4:00pm

Irvine Train Station
15207 Barranca Pkwy
Irvine, CA 92618

Phone: 949-451-1403

Email: olli@uci.edu

Website: ce.uci.edu/olli

VISIT US ON FACEBOOK

