

# KIT MAIL (Keep in Touch)

From OLLI at UCI

OSHER  
LIFELONG  
LEARNING  
INSTITUTE

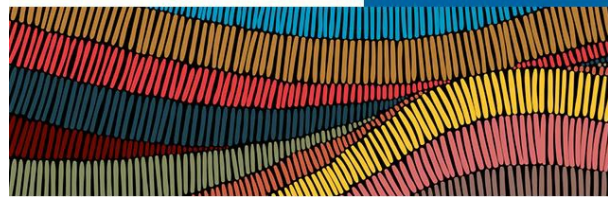
## SUMMER 2022

at University of California, Irvine

Monday, August 1, 2022

## Your OLLI at UCI membership connects you to UCI campus events!

UCI School of Social Sciences



### Inaugural August Virtual Book Club: Egyptian-American Literature

*A weekly book series hosted by  
Sherine Hamdy, Anthropology Professor, UCI*

The UCI School of Sciences will be hosting a weekly book series starting this week from

Anthropology Professor, Sherine

Hamdy. Dr. Hamdy will be discussing, "Inaugural August Virtual Book Club: Egyptian-American Literature." For more information or to register, click [here](#).

Our **Summer Session classes continue this week**. We'd like to share a warm welcome back to presenters and financial advisors, Kenneth Hansen and Jeffrey Pierce for **Your Investments**. This will be the first session of two. Join us in the classroom or online!

To view the summer catalog, click [here](#).

Our **Annual Member Survey** is still open and our OLLI Board of Director's would like to hear from every member! Click [here](#) or see info below.

Just a friendly reminder that **UCI re-implemented a universal masking policy which went into effect Monday, July 18th**.

All individuals on campus (which includes our OLLI classroom) are now required to wear a mask or face covering while indoors, regardless of vaccination status, except when alone in an enclosed space. For more details, please see notice at the end of this KIT Mail, or click [here](#).

Warmly,

OLLI at UCI

# FANTASTIC FEEDBACK from OLLI Members

- "I learned so much from this class and will review this over and over from the recorded lectures and the complete handout in which to learn more since there was so much to absorb."
  - *OLLI member in response to: Smart Phone Photography*
- "I knew nothing about the Grand Jury before... I now know a lot more!"
  - *OLLI member in response to: Orange County Grand Jury*

## SPOTLIGHT ON UPCOMING CLASSES: (Click on images to register)

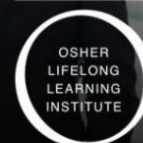


## YOUR INVESTMENTS

SE 8  
Tuesday, August 2, 9  
1:00 PM – 3:00 PM

Our ever-popular financial advisors from the Hansen/Pierce Wealth Management Group will be back at OLLI to inform and guide in these unusual times.

Presenters: Kenneth Hansen, CFA, MBA, AIF, Pilot, Vice President/ Investments at Stifel and financial advisor since 1985; Jeffrey Pierce, MBA, AIF, Vice President/Investments at Stifel, and financial advisor for nearly 40 years.



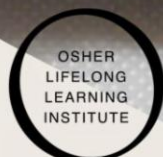
at University of California, Irvine

## Gemology

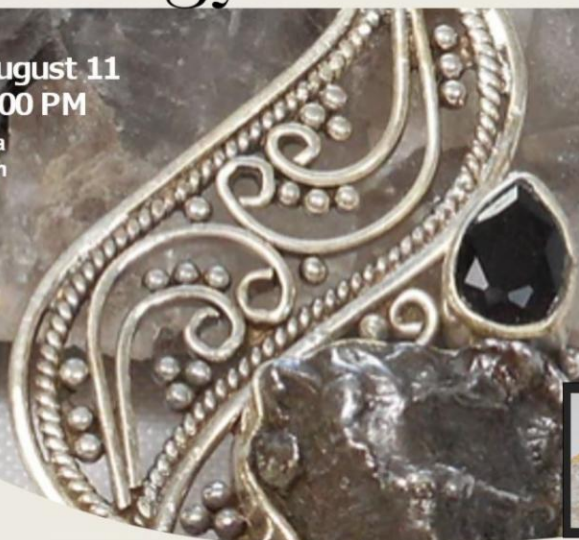
SE 9  
Thursday, August 11  
2:00 PM – 4:00 PM

Presenter: Andrea Weintraub, M.A. in Biology, Legal Studies, & Gemology from UCLA and UCSB. Owner Andrea Jaye Collection.

OLLI welcomes back Designer, Andrea Jaye, whose passion for fine quality gemstones, exotic minerals, jewelry, and philanthropy will talk about her work as a gemologist and jewelry designer. Pieces from her handmade collection will be available for purchase after, with a proceed of her sales going to OLLI at UCI.



at University of California, Irvine



# OLLI at UCI INFORMATION

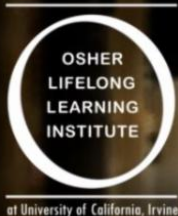
## OLLI Annual Member Survey

### Your Voice Matters!

As part of our 3-year Strategic Plan, your OLLI Board of Directors has created an [Annual Member Survey](#) and they would like your feedback.



Please click on the survey image above, or click [here](#) to share your voice and help ensure a sustained and diverse selection of intellectually stimulating courses and educational experiences for your OLLI.



## OLLI Remote Learning Center

To view online classes, you will need to create an account for the [ORLC](#). If you have not received your OLLI Membership ID, please email: [olli@uci.edu](mailto:olli@uci.edu).

If you already created an account for the [ORLC](#), you can use the same log in and video password that you created. If you have forgotten your (Video) password, the office can reset it, by emailing: [olli@uci.edu](mailto:olli@uci.edu).

NOTE: Please allow 5-7 business days for a video recording to become available after a classes has concluded due to the editing process. Thank you.



# WEEKLY SCHEDULE



## Upcoming Classes

### CLASS FORMAT LEGEND:

**A: Classroom ONLY** (Presenter and Audience attend in person)

**B/C: Hybrid with Presenter in person or via Zoom** (Audience attend in person or via Zoom)

**D: Zoom ONLY** (Presenter and Audience attend via Zoom)

## Calendar at a Glance

Monday 8/1	Tuesday 8/2	Wednesday 8/3	Thursday 8/4	Friday 8/5
<a href="#">10:00 AM</a>	<a href="#">10:00 AM</a>	<a href="#">10:00 AM</a>	<a href="#">10:00 AM</a>	<a href="#">9:30 AM</a>
<a href="#">1:00 PM</a>	<a href="#">1:00 PM</a> <b>SE 8</b> <b>Format B/C</b>	<a href="#">1:00 PM</a>	<a href="#">1:00 PM</a>	<a href="#">1:00 PM</a>

## Class Descriptions

Our ever-popular financial advisors from the Hansen/Pierce Wealth Management Group will be back at OLLI to inform and guide in these unusual times.

Presenters: Kenneth Hansen, CFA, MBA, AIF, Pilot, Vice President/Investments at Stifel and financial advisor since 1985; Jeffery Pierce, MBA, AIF, Vice President/Investments at Stifel, and financial advisor for nearly 40 years.

**SE 8**  
**Format B/C**

**YOUR INVESTMENTS**  
**(session 1 of 2)**

**Tuesday, August 2, 9**  
**1:00 PM - 3:00 PM**

# IMPORTANT CLASS NOTICES

No new class notices.

## UCI COVID-19 VACCINATION POLICY

### OLLI at UCI COVID-19 VACCINATION REQUIREMENT

- OLLI will continue to ask members to provide proof of COVID-19 vaccination at the first class meeting or special event a member attends.
- To view UCI's Vaccination Policy, click [here](#).
- If a member (or guest) is not vaccinated, OLLI requests that they attend class online.



To add your digital State of California COVID-19 vaccination record to your phone, fill out the following form: <https://myvaccinerecord.cdph.ca.gov>

## UCI COVID-19 MASK POLICY



From the UCI Office of  
the Provost and Executive  
Vice Chancellor: Hal Stern

- All individuals on campus will be required to wear a mask or face covering while indoors, regardless of vaccination status, except when alone in an enclosed space. This update is in line with the [Centers for Disease Control and Prevention](#) and the [California Department of Public Health's](#) recommendations on masking and face coverings. Please refer to the revised [Chancellor's executive directive on face coverings](#) for details.
- OLLI will continue to provide face coverings to those that request

one.

To read the Chancellor's full message, click [here](#).

For the latest COVID-19 information, please continue to visit the [UCI Forward website](#).

## CONTACTING US



### OLLI at UCI

Office hours: 9:00am - 4:00pm

[Irvine Train Station](#)  
[15207 Barranca Pkwy](#)  
[Irvine, CA 92618](#)

Phone: 949-451-1403

Email: [olli@uci.edu](mailto:olli@uci.edu)

Website: [ce.uci.edu/olli](http://ce.uci.edu/olli)

## VISIT US ON FACEBOOK

